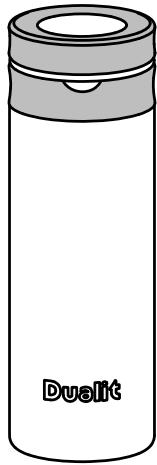


Dualit®



TRAVEL MUG

Dualit®

VISIT DUALIT.COM TO VIEW OUR FULL RANGE

WICHTIG: Um die Sicherheitshinweise auf Deutsch zu lesen, scannen Sie den QR-Code



IMPORTANT: Pour lire les consignes de sécurité en français, scannez le code QR



Dualit Limited
County Oak Way Crawley
West Sussex RH11 7ST
+44(0)1293 652 500 info@dualit.com

GB-A

IMPORTANT SAFETY PRECAUTIONS



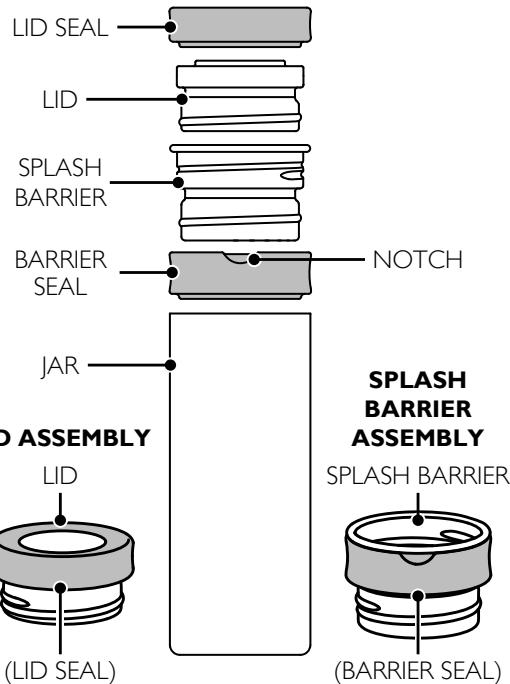
- Do not use if the Jar is punctured, split or damaged, the Jar may become hot. **Risk of Burns.**
- When making a drink with just boiled water (95-100°C) and you do not plan to top up with cold milk/water;
 - Always allow to stand for 15 minutes before fitting the Lid. **Risk of scalding.**
 - Keep hands and face away from joints when removing Lid and Splash Barrier, as pressure may have built up inside. **Risk of Scalding.**
- Do not pour hot liquids into Travel Mug on an uneven surface or surface that can cause Travel Mug to move, such as a tray. **Risk of scalding.**
- Do not unthread Splash Barrier Assembly if filled to 500ml maximum capacity. Only unthread Lid Assembly. **Risk of scalding.**
- Do not use with carbonated beverages.
- Do not microwave. **Risk of explosion/fire.**
- Keep out of reach of children when using hot liquids.
- Do not use sharp, abrasive/aggressive cleaning agents, bleach or scouring pads to clean the Travel Mug.
- Caution when using and cleaning product, as edges may be sharp. **Risk of injury.**
- Do not put the Travel Mug components in the freezer. Freezing temperatures can damage the double wall and vacuum seal of stainless-steel products.

DON'T FORGET TO REGISTER YOUR PRODUCT

DUALIT.COM/REGISTER

Register my appliance

KNOW YOUR TRAVEL MUG



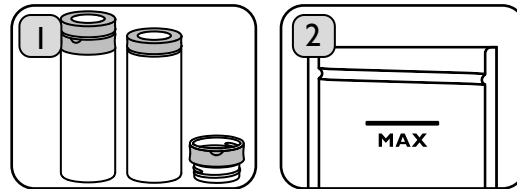
BEFORE FIRST USE OR AFTER LONG PERIOD OF NON-USE

Wash all Travel Mug parts before use with warm, soapy water or on the top shelf of a dishwasher. Follow "Cleaning Your Travel Mug" for further information on cleaning, assembly and disassembly.



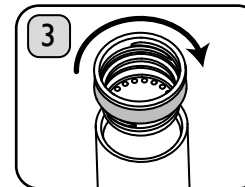
Model No: DTM1

USING YOUR TRAVEL MUG

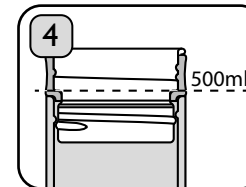


You can use your Travel Mug with or without the Splash Barrier. The Splash Barrier increases the capacity to 500ml (16.9 Fl.oz) and helps control flow rate, enabling you to drink on the go.

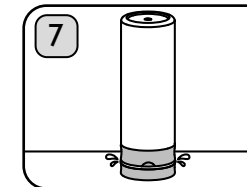
Using your Travel Mug with the Splash Barrier: Remove the Lid and Splash Barrier Assembly, fill to max mark (430ml/14.5 Fl.Oz).



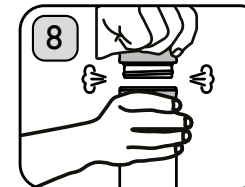
Fit Splash Barrier Assembly by threading clockwise onto Jar. Do not overtighten. **Caution: Risk of scalding. Do not overfill, take care when handling hot liquids.**



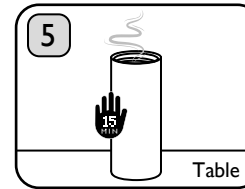
You can then top up with additional fluids to the 500ml mark. Do not overfill. **Caution: Hot Liquids, risk of scalding.**



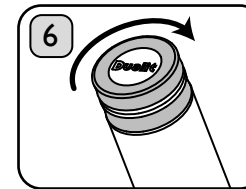
Check you have a good seal by holding the Travel Mug above the sink upside down. Re-tighten the Splash Barrier Assembly and Lid Assembly if to release any steam pressure required. **Caution: Risk of scalding.**



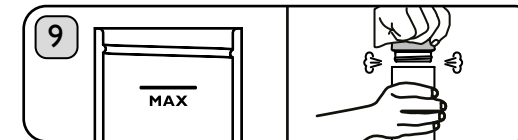
To drink, hold the Barrier Seal and slowly rotate the Lid Assembly anti-clockwise. Only rotate a small amount initially, to release any steam pressure that may have built up inside. **Caution: Keep hands away from joint when opening. Risk of scalding.**



When making a drink with just boiled water (95-100°C) and you do not plan to top up with cold milk or water, always allow to stand for 15 minutes before fitting the lid. **Caution: Risk of scalding. Do not allow young children to use with hot liquids.**



Fit the Lid Assembly by threading clockwise onto the Splash Barrier Assembly. Hold the Jar and tighten the Lid. Do not overtighten threads as this may cause the seal to leak. **Risk of scalding.**

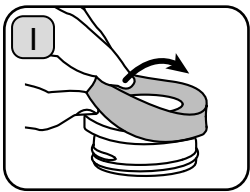


Using your Travel Mug without Splash Barrier: You can use the Travel Mug without the Splash Barrier Assembly. Simply fit the Lid Assembly directly to the Jar. Do not fill above max mark. **Risk of scalding.**

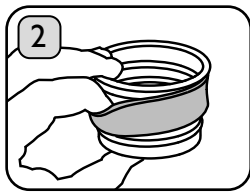
To drink, hold the Jar and remove the Lid Assembly by slowly rotating anti-clockwise. Only rotate a small amount initially, to release any steam pressure that may have built up inside. **Caution: Keep hands away from joint when opening. Risk of scalding.**

CLEANING YOUR TRAVEL MUG

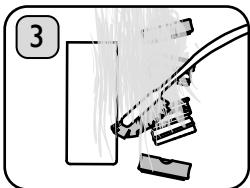
Caution when using and cleaning product as edges may be sharp. **Risk of injury.**



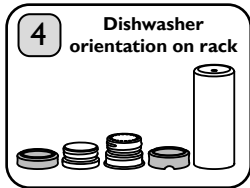
The Lid Seal can be removed by pinching the bottom and top surfaces of the Lid Seal to allow your fingers to pry the seal off upwards.



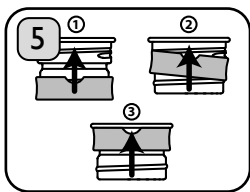
The Barrier Seal can be removed by placing a finger into the Notch and applying pressure downwards.



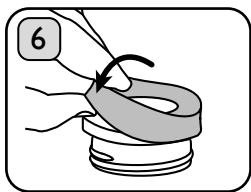
Hand wash: The individual parts can be hand washed in warm, soapy water.



Dishwasher: Place all parts on the top rack of the dishwasher as illustrated, to reduce water build-up. Wash on a sub 40°C cycle. Place small components such as silicone seals in the cutlery tray or basket, to avoid damage or loss.



To reassemble, place the Barrier Seal on the bottom of the Splash Barrier. Guide Barrier Seal upwards until it reaches the Spill Barrier rim.



Hook one side of the Lid Seal onto the Lid. Pull the opposite seal side over the Lid until seal is secured. Ensure all parts are dried before storage to reduce residue build-up.

TOP TIPS FOR YOUR TRAVEL MUG

- When using your Travel Mug for a frothy coffee, gently circulating the Jar, whilst upright, will help the froth mix with the liquid and pass through the Splash Barrier, preventing residue.
- For best results when using for hot drinks, preheat the Travel Mug by dispensing hot water into the Jar first. Dispose of the water before pouring in your drink. Preheating your mug will also help keep your drink hotter for longer. If you pour your drink into a cold mug, a significant amount of the liquid's heat will be lost.
- Using your Travel Mug for a coffee shop refill? Add a small amount of hot water to the Jar before you go, to pre-warm your Travel Mug, or ask the coffee shop to do it for you. Discard pre-warmed water before your drink is prepared.
- Barrier Seal may rotate around Splash Barrier if Splash Barrier or inside of the Barrier Seal are wet when assembled. To avoid this, dry parts or squeeze tighter.
- The Travel Mug is ideal for soup, as it won't absorb flavours, odours or taint. However, please exercise extreme caution when opening and drinking as the soup may be hotter than you think.
- Add ice cubes to the Travel Mug if using for cold beverages to increase the length of time it will stay cold.
- Store in upright position for best keep warm or cool performance.

SUBSCRIBE

& Save

Register & receive a **10% DISCOUNT** on our coffee range* with every subscription.

*Terms apply. See website for details.

SELECT
your items

SET your
order frequency

MANAGE
your subscription

Coffee Capsules



ESE Pods

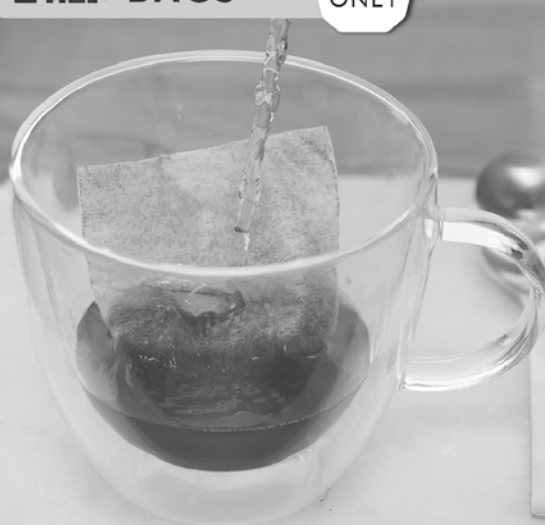


Coffee Bags



**DISCOVER
COFFEE
BAGS**

UK
ONLY



COMPOSTABLE⁺
COFFEE BAGS

MESS-FREE,
GREAT-TASTING COFFEE
IN THREE MINUTES



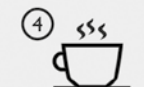
Place coffee bag in mug



Add freshly boiled water



Brew for 3 mins, stir every 30 secs



Squeeze, remove, enjoy!

*Suitable for industrial composting through authorised food waste collection schemes.