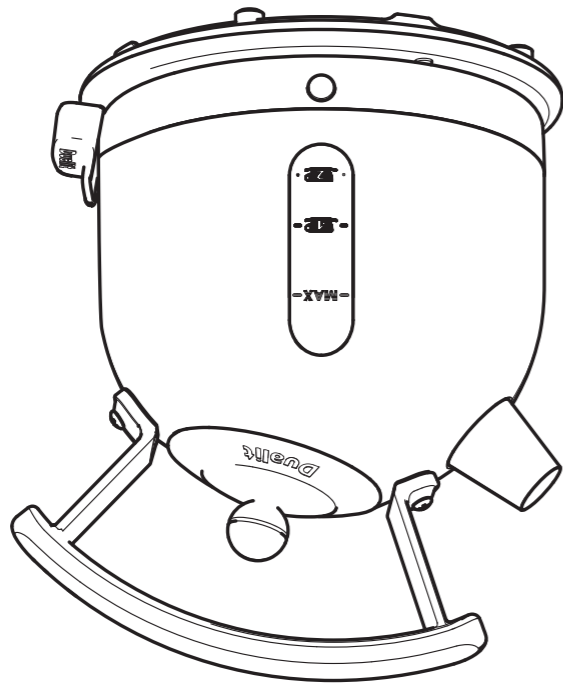


- Read this instruction manual before you start using the appliance. It gives you important safety information and will ensure you get the most out of your Dualit product.
- Keep this manual and your proof of purchase in a safe place.
- All illustrations are for representation only, your model may vary from the 1.7L illustrations shown.
- In the interest of improving products, Dualit Ltd. reserves the right to change the product specification without prior notice.
- All illustrations are for representation only, your model may have a different appearance from illustrations shown.



Dome Kettle
Instruction Manual



Since 1945
Dualit

TROUBLESHOOTING

IMPORTANT: FAILURE TO DESCALE AND CLEAN YOUR MACHINE WILL INVALIDATE YOUR GUARANTEE.
*TO CONTACT CUSTOMER SERVICES, PLEASE EMAIL INFO@DUALIT.COM WITH YOUR MODEL AND SERIAL NUMBERS.

| POSSIBLE CAUSE(S) | SOLUTION(S) |
|------------------------------------------------------------------------------------------------------------------------------------------------------------------------------------------------|-------------------------------------------------------------------------------------------------------------------------------------------------------------------------------------------------------------------------------------------------|
| THE KETTLE DOES NOT TURN ON | |
| 1. The Kettle may not be properly connected to the power supply or the fuse may have failed. | 1. Check the plug is in the socket and the switch is turned on. Replace the fuse if necessary. Note: in order to open the plug, remove the label to reveal the screw. |
| 2. Boil Dry feature may have been activated. If the Kettle is accidentally switched on without water, the Boil-Dry device will switch off the heating element to prevent damage to the Kettle. | 2. Wait approximately 10 minutes for the Kettle to cool down, lift and refill as normal. The Kettle is now ready to use again. NOTE: if discolouration of the Heating Plates has occurred, this can be easily removed by descaling your Kettle. |
| 3. The Element may have broken if the Power Neon illuminates but the Kettle does not boil. | 3. The Element cannot be replaced. For further assistance, contact customer services* |
| 4. The Kettle does boil but the Power Neon does not illuminate. | 4. The Power Neon may have blown, and cannot be replaced. For further assistance contact customer services* |
| THE KETTLE IS SPUTTERING OUT OF THE SPOUT | |
| 1. You may have over filled the Kettle. | 1.1 Only fill to the Max Mark (1.7L - Model: DDK5A or 2.0L - Model: DDK6A). 1.2 Wait 10 seconds to allow the boiling water to settle before pouring. |
| 2. The Kettle may have descaling solutions remaining inside the body. | 2. Follow the instructions from the cleaning & care section and rinse thoroughly. |
| 3. The Water Filter may not be in position. | 3. Ensure the Water Filter is in position. For spare Water Filters, contact customer services* |
| MY KETTLE IS NOT SWITCHING OFF | |
| 1. Limescale may have built up inside the Kettle. | 1. Descale your Kettle regularly (see Limescale Warning). |
| 2. Check the Lid is firmly closed during use. | 2. Pips on inner Lid rim can be pushed in to create a tighter fit |
| 3. Water may have gone down the Steam Tube whilst filling. You may have overfilled, tilted the Kettle when filling or filled through the Spout. | 3. Leave the Kettle for 24 hours to fully dry. |
| MARKS HAVE APPEARED IN THE KETTLE | |
| 1. Small brown spots can build up inside the Kettle. This is not rust, small deposits of scale which contain iron can build up inside the Kettle. | 1. Descale regularly (see Limescale Warning). |
| WATER DROPLETS COLLECTS ON TOP THE POWER BASE | |
| 1. This is condensation and perfectly normal. | 1. Dry with non-abrasive cloth. |

IMPORTANT SAFETY PRECAUTIONS

READ ALL INSTRUCTIONS

KEEP THESE INSTRUCTIONS FOR FUTURE REFERENCE

IMPORTANT SAFEGUARDS

• THIS IS AN ATTENDED APPLIANCE

Do not leave appliance unattended during use, unplug after each use. Risk of fire if an unattended appliance is left operating or plugged in.

- This appliance must not be used by children younger than 8 years old and persons with very extensive and complex disabilities. Children aged 8-14 years and persons with reduced physical, sensory or mental capabilities or lack of experience and knowledge shall not use this appliance, unless they are supervised and have been given instruction concerning the use of the appliance in a safe way and understand the hazards involved. Children shall not play with the appliance. Cleaning and user maintenance shall not be made by children unless they are older than 8 and supervised. Keep the appliance and its cord out of reach of children less than 8 years old. **Risk of fire, electric shock, scalding or injury to persons.**
- This appliance is intended for household use only. If the appliance is used improperly or for professional or semi-professional purposes or if it is not used according to these instructions the Guarantee becomes invalid and Dualit refuses any liability for damage caused. **Risk of fire, electric shock, scalding or injury to persons.**

Electrical Safety

- Before connecting to the mains supply:
- Check that the voltage marked on the appliance corresponds with the supply voltage. **Risk of electric shock and fire.**
- NOTE: Any plug cut from the power supply cord should be disposed of immediately. Inserting any cut off plug into a 13A socket-outlet is hazardous. **Risk of electric shock and fire.**
- Never use the plug without the fuse cover fitted. Ensure replacement fuse is the same current value as the original. Replacement fuses are available and should be ASTA approved to BSI 362. **Risk of electric shock and fire.**
- In order to avoid a hazard, if the Power Cord is damaged it must, for safety reasons, be replaced by Dualit or a qualified electrician. Call Dualit's Customer Helpline on +44 (0)1293 652 500. **Risk of electric shock and fire.**
- To be protected against electrical hazards, fire and injury to persons, do not immerse the power cord, plug or appliance in water or any other liquid. **Risk of electric shock.**
- Never touch the Power Cord with wet hands. **Risk of electric shock.**
- Do not operate any appliance with a damaged lead or plug, or after the appliance malfunctions or has been dropped, damaged or cracked in any manner. **Risk of fire, electric shock or injury.**
- A short Power Cord is provided to reduce risks resulting from becoming entangled in or tripping over a longer cord. **Risk of scalding.**

General Safety

- NOTE: When you lift the kettle from the base you will see drops of moisture on the surface of the Power Base. This is the steam used to switch the kettle off automatically. This then condenses and escapes through vents in the underside of the kettle. This is perfectly normal and should not be cause for alarm or returning the kettle.
- Do not place the kettle, Power Base or mains lead on or near any hot surface, hot hob, gas burner or in a heated oven. **Risk of fire.**
- Ensure that the kettle is correctly positioned on the Power Base before switching on. **Risk of electric shock and scalding.**
- Do not operate on an uneven surface. The appliance must only be operated on a flat, horizontal surface. **Risk of injury.**
- Do not use in bathroom or outdoors. **Risk of electric shock.**
- Remove the kettle from its Power Base before filling or pouring. **Risk of electric shock.**
- Do not fill via the Spout. **Risk of scalding and damage.**

- Do not operate the kettle unless the Water Filter is correctly in position. **Risk of scalding.**
- Do not operate the kettle unless it contains at least 250ml of water and the floor of the kettle is covered. **Risk of damage.**
- Do not use the kettle for any purpose other than heating water. **Otherwise, this will result in an injury caused by misuse.**
- Do not fill above the 'max' mark on the Water Level Indicator. **Risk of electric shock and burns.**
- Ensure that the Lid is fully closed before switching the kettle on, otherwise it may not properly switch off and take longer to heat water.
- Do not move the kettle while it is switched on. **Risk of scalding and burns.**
- Do not remove or open the Lid while the water is heating. **Risk of scalding.**
- Ensure that the kettle Spout is pointing away from any electrical plug or socket. **Risk of electric shock and fire.**
- Use Handles or Knobs – do not touch hot surfaces. **Risk of burns.**
- Take care when pouring – pour slowly and do not over-tilt the kettle. **Risk of scalding.**
- When heating, hot steam will be emitted from the kettle. **Scalding will occur if you are within 400mm of the Lid, Spout or Steam Vents either side of the lid.**
- If the kettle is overfilled, hot water may be ejected. **Risk of electric shock and scalding.**
- Water will remain hot for a considerable time after heating and can present a scald hazard. Keep the kettle, Power Base and the mains lead away from the edge of worktops and out of the reach of children. **Risk of scalding.**
- Avoid spilling of any liquid on the connector. **Risk of electric shock.**
- Use the appliance only with the Power Base supplied and vice versa. **Risk of electric shock.**
- Extension cords are available and may be used if care is exercised in their use. If extension cord is used the marked electrical rating of the cord set or extension cord should be at least as great as the electrical rating of the appliance. **Risk of electric shock.**
- The use of accessory attachments is not recommended by Dualit. **Risk of fire, electric shock or injury to persons.**
- This kettle features boil-dry protection. If the kettle is accidentally switched on without water, the boil-dry device will switch off the heating element to prevent damage to the kettle. Wait approximately 10 minutes for the kettle to cool down, lift and refill as normal. The kettle is now ready to use again. NOTE: If discolouration of the heating plate has occurred, this can be easily removed by descaling your kettle.
- Unplug the appliance from the mains and allow to cool before cleaning, maintaining or moving. **Caution: Hot water. For details, please refer to cleaning section. Risk of fire, electric shock, scalding or injury to persons.**
- To disconnect, turn any control off, then remove plug from wall outlet.
- Do not store or use in an appliance garage or under cupboards. **Risk of fire.**
- CAUTION: To prevent damage to the appliance, do not use alkaline cleaning agents. When cleaning, use a soft cloth and a mild detergent. **Risk of damage.**
- Do not use scouring pads or abrasive cleaner on the appliance body. **Risk of damage.**
- Do not heat the kettle if filled with descaling solution. **Risk of injury.**
- Visit our website for full specification and instructions.

SAVE THESE INSTRUCTIONS

In the interest of improving products, Dualit Ltd. reserves the right to change the product specification without prior notice.

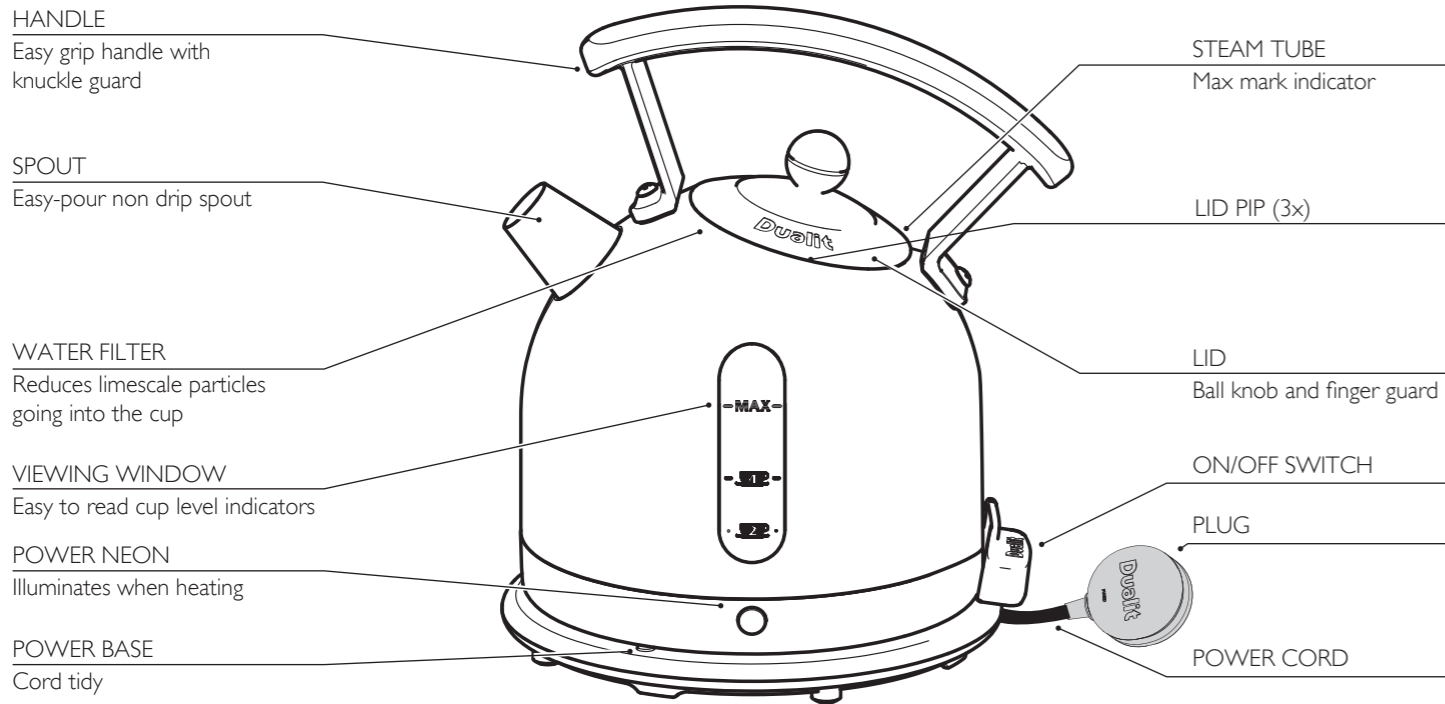
All illustrations are for representation only, your model may vary from illustrations shown.



INSTRUCTIONS ON ENVIRONMENT PROTECTION

Do not dispose of this product in the usual household garbage at the end of its life cycle. Please hand it over to a collection point for the recycling of electrical and electronic appliances. The symbol on the product, the instruction of use or the packaging will inform you about the methods of disposal. The materials are recyclable as mentioned on its marking. By recycling, material recycling or other forms of re-utilization of old appliances you are making an important contribution to protect our environment. Please enquire about the community administration for the authorised disposal location.

KNOW YOUR DOME KETTLE



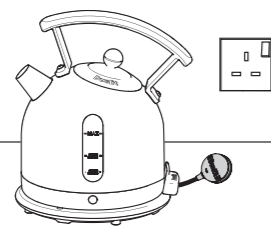
SETTING UP

1 REGISTER MY APPLIANCE



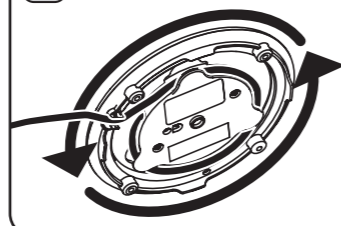
Register your appliance at www.dualit.com. This will only take 60 seconds. You will need the product model and serial numbers that are on the rating label on the base of the product.

2 POSITION



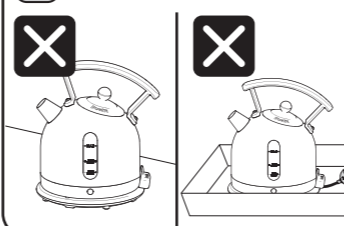
Place your Kettle as close to the wall socket as possible. **DO NOT STORE OR USE YOUR KETTLE IN APPLIANCE GARAGE OR UNDER CUPBOARDS. RISK OF FIRE.**

3 CORD TIDY



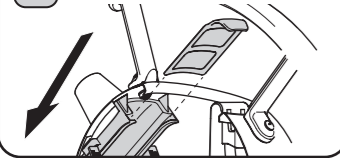
Use the shortest cord possible. Wrap excess Cord around the Cord Tidy under the Power Base.

4 DO NOT...



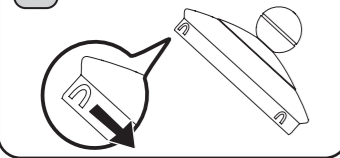
Do not operate on an inclined plane. Do not operate in a tray.

5 WATER FILTER



Ensure Water Filter is in place. **DO NOT OPERATE KETTLE UNLESS THE WATER FILTER IS CORRECTLY IN POSITION.**

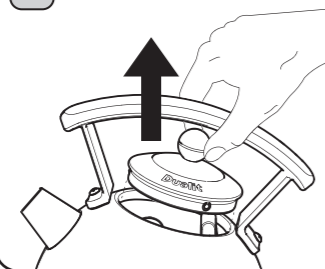
6 LID TIGHTNESS



Tip: If the Lid is too tight, try pushing in the Pips on the inside of the Lid with a spoon handle. Pushing the Lid Pips back out will give a tighter fit. **WARNING: IF THE LID IS TOO LOOSE, RISK OF SCALDING.**

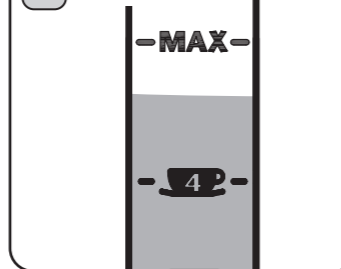
FILLING YOUR KETTLE

1 OPEN LID



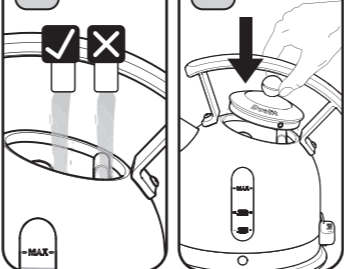
Ensure that the Kettle is unplugged. Remove the Kettle from the Power Base. Open the Lid by pressing the Lid Release. **CAUTION: WHEN HEATING HOT STEAM WILL BE EMITTED FROM THE KETTLE. SCALDING WILL OCCUR IF YOU ARE WITHIN 400MM OF THE LID OR SPOUT.**

2 FILLING



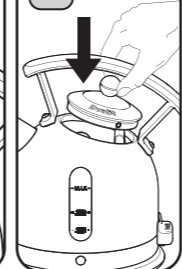
Fill the Kettle through the Lid opening. Use at least one cup of water (250ml). The water level must stay below the Max Mark Indicator. Save energy by only heating what you require. Keep Kettle upright and level at all times when filling. Do not tilt Kettle backwards. **DO NOT OVERFILL OR FILL THROUGH THE SPOUT. RISK OF SCALDING.**

3



CAUTION when filling to ensure water does not go down the Steam Tube, preventing the Kettle from correct operation.

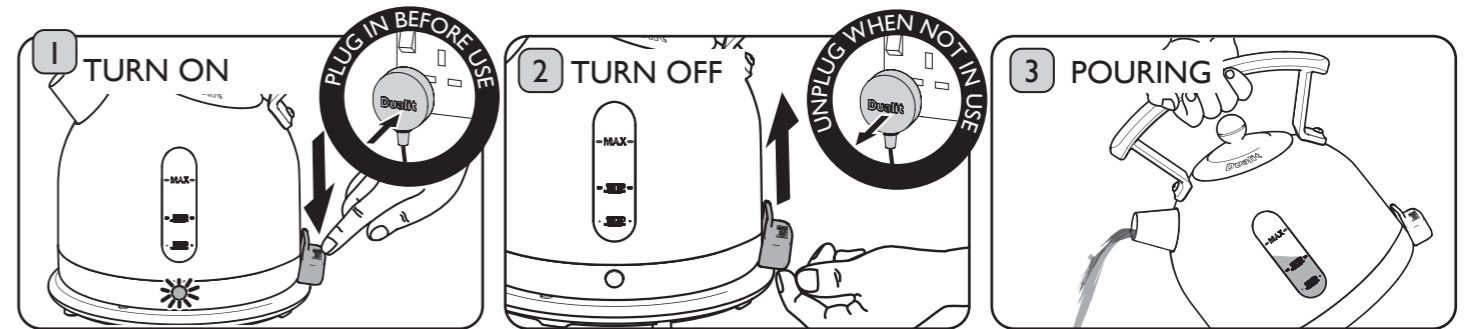
4



Close the Lid using the Knob to push firmly in place. Check that it is fully in place, otherwise the Kettle may not switch off when boiling.

BOILING WATER

WARNING: IF THE KETTLE HAS JUST BOILED IT WILL BE FULL OF STEAM THAT WILL ESCAPE AS SOON AS THE LID IS OPENED. THE LID WILL BE HOT. USE THE BALL KNOB TO OPEN AND CLOSE THE LID. RISK OF SCALDING.



Plug the Kettle into the power socket. Press the 'On/Off' Switch down. The Power Neon will illuminate and the Kettle will start to heat up. If the Kettle is accidentally switched on with no water inside, the Boil-Dry device will switch off the heating element to prevent damage to the Kettle.

The Kettle will automatically turn off after the water has boiled. To turn off before the water has boiled lift up the On/Off Switch. **DO NOT LEAVE THE APPLIANCE UNATTENDED DURING USE. UNPLUG AFTER EACH USE. RISK OF FIRE IF AN UNATTENDED APPLIANCE IS LEFT OPERATING OR PLUGGED IN.**

Remove Kettle from the Power Base. When filling or carrying the Kettle, do not tilt it backwards, as this may allow water to pass through the Steam Tube onto the Control Area. Should this happen, the Kettle must be allowed to dry before re-using. To avoid the risk of splashing, once the Kettle has boiled wait 10 seconds then pour slowly. Do not over-tilt the Kettle.

LIMESCALE WARNING!

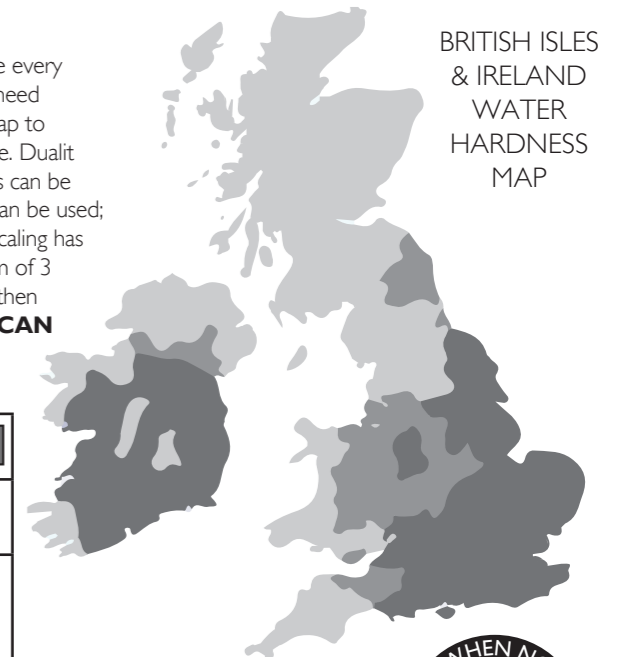
LIMESCALE BUILD UP

It is important to regularly descale your kettle to prevent limescale building up over time. This build up can cause damage to your kettle and alter the way your hot drinks taste. Follow these steps to minimise limescale build up in your kettle: Empty the kettle after each use; do not leave water in the kettle overnight. Use filtered water instead of tap water. Avoid using bottled water as this is classed as hard water.

DESCALE REGULARLY

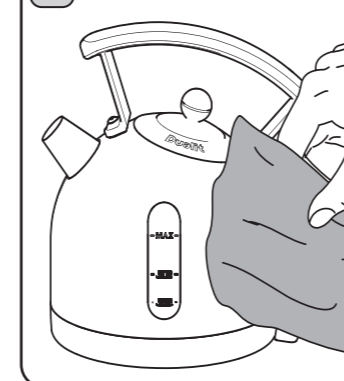
Dualit recommends descaling regularly; at least once every 2 months. If you live in a hard water area you may need to descale more often. See our Water Hardness map to determine how often you should descale your kettle. Dualit recommends Kilrock K Multi-Purpose Descaler. This can be purchased from www.dualit.com. Other descalers can be used; follow the instructions on the packaging. When descaling has finished empty the kettle and rinse it out a minimum of 3 times with fresh water. Refill with fresh water, boil, then discard the boiled water. **FAILURE TO DO SO CAN CAUSE INJURY. DO NOT HEAT KETTLE WITH DESCALING SOLUTION IN IT.**

| WATER HARDNESS | Hardness level | Soft | Medium | Hard |
|------------------|------------------------|---------------------------------------------------|----------------------------------------------|---------------------------------------------|
| | CaCO ₃ mg/l | 0-100 | 101-200 | 201+ |
| ACTION FREQUENCY | Descal | At least once every 4 months or every 200 cycles. | At least every 2 months or every 100 cycles. | At least once per month or every 50 cycles. |



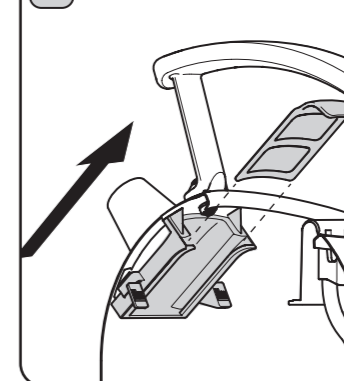
CLEANING & CARE

1 THE BODY



Before cleaning make sure the appliance is switched off, unplugged and allowed to cool. Remove Kettle from the Power Base. Wipe the outside and inside surfaces with a damp cloth. Ensure that all connectors and sockets are kept dry. **Do not immerse the Body, Power Base, Power Cord or Plug into water or other liquid. Risk of electric shock and fire. Do not use sharp, abrasive or aggressive cleaning agents, bleach or scouring pads to clean the appliance. The use of such cleaning implements may affect the life of the appliance.**

2 WATER FILTER



Make sure the appliance is switched off, unplugged and allowed to cool. Open the Lid. Hold the top of the Water Filter, pull up and out of the Kettle. Rinse under a tap whilst brushing carefully with a soft brush. Rinse out the Kettle with fresh water. To replace align the Water Filter with the grooves in the Filter Holder, insert and push back into place. **Do not operate Kettle unless Water Filter is correctly in position. Risk of scalding and injury caused by misuse.**