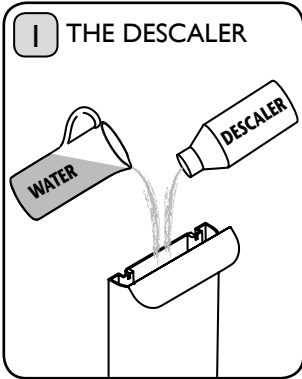
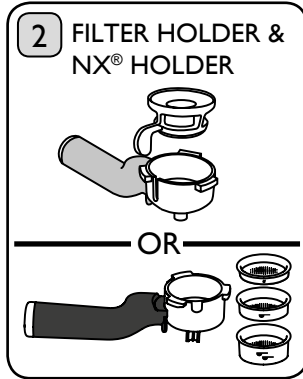


DESCALE REGULARLY

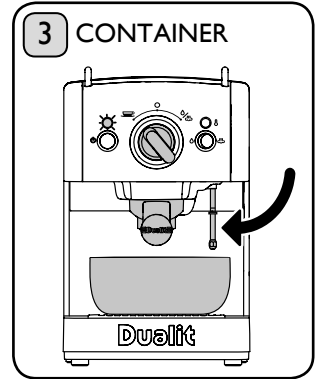
IMPORTANT NOTICE: PRODUCT FAILURE DUE TO THE BUILD UP OF LIMESCALE IS NOT COVERED BY GUARANTEE - DESCAL REGULARLY: DUALIT RECOMMENDS KILROCK ESPRESSO & COFFEE MACHINE DESCALER.



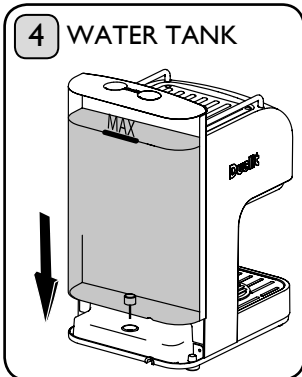
Ensure your descaling product is suitable for coffee machines; **follow descaling product instructions carefully.** Fill Water Tank with the descaling solution. **Descale once a month in hard water areas.**



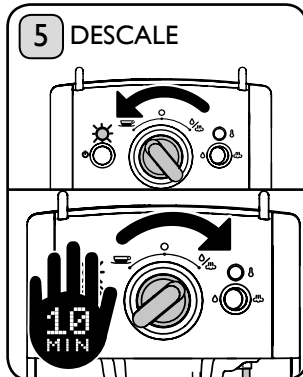
Place the Holder most frequently used into the machine, ensuring it is empty. If both Holders and Filters are used frequently, cycle between them. **Do not soak the holders in descale solution.** Ensure they are rinsed thoroughly after descaling.



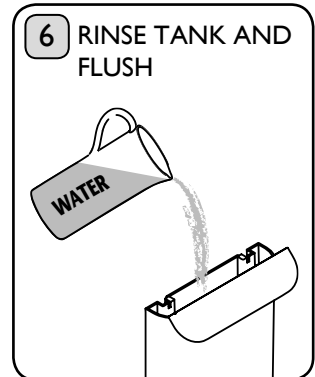
Place a container with a capacity of more than 1 litre on the Drip Tray underneath the Holder. **Caution: Do not remove the Drip Tray.** Remove Froth Nozzle from the Steam Wand. Direct Steam Wand into container.



Insert Water Tank. Plug machine in and turn on; wait until machine has reached operating temperature. **Caution: Keep hands away from Steam Wand at all times.**



Turn dial fully to the left and empty half of the tank. Then turn dial completely to the right to dispense the remaining water through the steam wand. **WARNING:** ensure that the switch is set to water; not steam. Wait 10 minutes for descaling to take effect, prior to stage 6.



Once machine is descaled, discard descaling solution. Thoroughly rinse Water Tank and repeat steps 2-5. **Flush at least two full tanks of fresh water through the machine, Filters and Steam Wand** to remove any traces of descaling solution.