

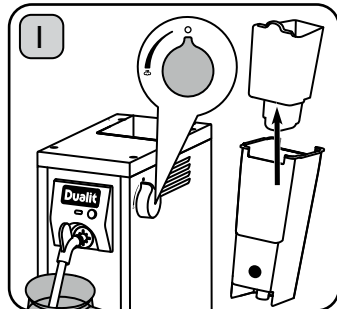
ATTENTION - SETTING UP

Dualit®

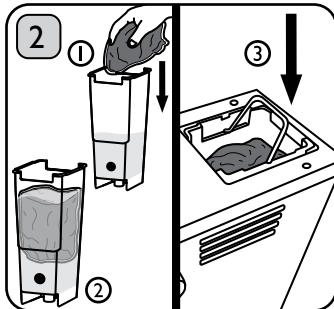
Since 1945



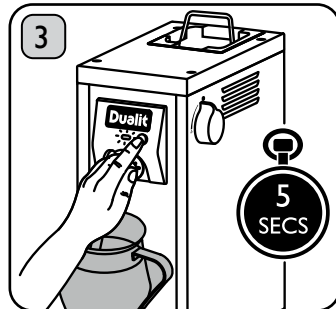
To set up the Milk Steamer, follow the Instruction Manual provided.
If the Milk Steamer is still not producing steam, follow the instructions below.



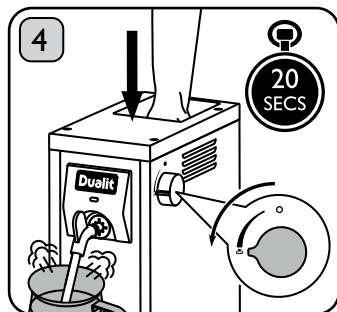
Ensure the Steam Valve is at 0. Turn on by pressing the ON/OFF Switch. Position the Milk Jug below the Steam Nozzle, remove Water Tank, then the Water Filter Holder & set the Water Filter Holder aside.



Fill Water Tank halfway (425ml). Place a tea towel in a plastic bag & place it in the Water Tank (1), above the water level to create a tight fit in the Water Tank (2). Place the Water Tank back inside the machine (3).

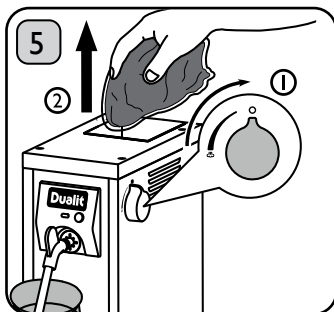


Press & hold the Descal Button for 5 seconds. The Indicator Light will flash red.

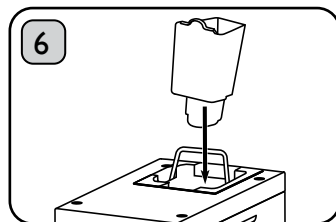


Turn the Steam Valve fully anti-clockwise. Gently apply downward pressure to the plastic bag; until water comes out of the Steam Nozzle. Note this may take up to 20 seconds.

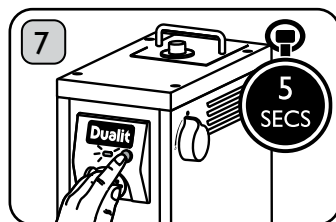
Caution: Steam & Hot Water from nozzle, risk of scalding.



Turn the Steam Valve clockwise fully (1), then remove the plastic bag & tea towel (2).



With the Water Tank still inside the machine, place the Water Filter Holder back inside the Water Tank.



Press & hold the Descal Button for 5 seconds. Your Milk Steamer is now ready to use.

Visit dualit.com/cino for the most recent Instruction Manual

Dualit®

Dualit Limited County Oak Way Crawley West Sussex RH11 7ST
+44(0)1293 652 500 | info@dualit.com | www.dualit.com